



Experience the history of
Kumamoto through virtual reality
“Kumamoto through the ages”
See, hear, and touch the Story Palace as you
enjoy a drama that crosses time and space.
Before you visit the castle,
experience the history and culture of the region.



Sakuranobaba Josaien Historical Culture Experience Facility Wakuwaku Za (Information)

- Address: 1-1-1 Ninomaru, Kumamoto City, Kumamoto
- Parking: Pay parking for passenger cars, large motorcycles, etc.
- Facility bus stop: 8:00–18:00 Reservations required (free)
For reservations, call 096-288-0807
Also use this number for group reservations.
- Bicycle parking: Available

Admission and fees	
Historical Culture Experience Facility Wakuwaku Za	Kumamoto Castle
[Individuals] Adult ¥300 Child (elementary and JHS student) ¥100 [Groups over 29] Adult ¥240 Child (elementary and JHS student) ¥80 *Group discount only applies on groups of 30 or more.	[Individuals] Adult ¥500 Child (elementary and JHS student) ¥200 [Groups over 29] Adult ¥400 Child (elementary and JHS student) ¥160 *Group discount only applies on groups of 30 or more.
Kumamoto Castle/Wakuwaku Za Admission Ticket Adult ¥600 Child (elementary and JHS student) ¥200	
Historical Culture Experience Facility Wakuwaku Za	Kumamoto Castle
[Mar.–Nov.] 8:30–18:30 (admission until 18:00) [Dec.–Feb.] 8:30–17:30 (admission until 17:00) *Closed: Dec. 29–31	[Mar.–Nov.] 8:30–18:00 (admission until 17:30) [Dec.–Feb.] 8:30–17:00 (admission until 16:30) *Closed: Dec. 29–31

<Access>

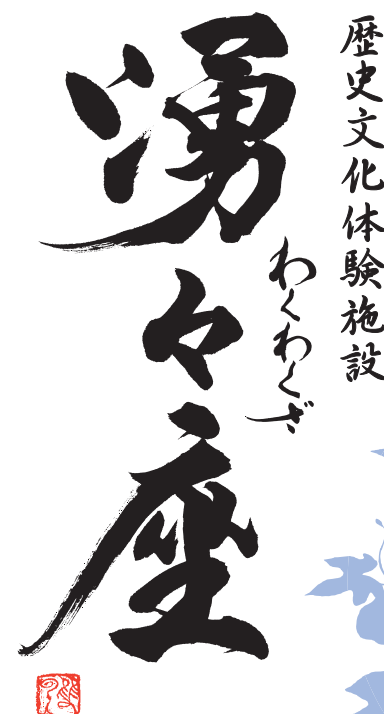
- ◆ From Kumamoto Airport
<By limousine bus>
Kumamoto Airport bus stop–Kotsu Center
Time: About 40 min.
(Departs 15 min. after aircraft arrival)
- ◆ From Kumamoto I.C.
Take National Route 57 to
downtown Kumamoto
About 30 min by car
- ◆ From Mashiki Kumamoto Kuko I.C.
Take Prefectural Route 36 (No. 2
Kuko Line) to downtown Kumamoto
About 30 min. by car
- ◆ From Ueki I.C.
Take national Route 3 to
downtown Kumamoto
About 40 min. by car
- ◆ From Kumamoto Station
<By bus>
Kumamoto Castle loop bus “Shiromegurin”
*Loop bus originates in from of Kumamoto Station,
and runs through Kumamoto Castle area.
Kumamoto Station–
Kotsu Center–Sakuranobaba Josaien
Time required: About 23 min.
*Shiyakusho-mae–Sakuranobaba Josaien
Time required: About 7 min.
<By streetcar>
Kumamoto Ekimae stop–
Kumamoto Castle-Shiyakusho-Mae stop
Time required: About 10 min.

For more information

Historical Culture Experience Facility
Wakuwaku Za
1-1-1 Ninomaru, Kumamoto City, Kumamoto
Tel: 096-288-5600 Fax: 096-288-0808

English

Historical Culture Experience Facility
Wakuwaku Za



A Moving and
Entertaining Experience



Slip back in time to the old Kumamoto Castle, and discover the Heart of Higo

1F

Wakuwaku Za - Kumamoto through the ages

An easy-to-understand introduction to Kumamoto's fascinating history and the castle town, from Katō Kiyomasa's entry into Higo to the Satsuma Rebellion.



Introduction to Kumamoto Castle

Discover the spiritual core of the Kumamoto people hidden in the "six ornamental flowers" of Higo, and see Kumamoto Castle in its prime.

1 Overview of Kumamoto Castle

2 The warrior garden: "Higo's six ornamental flowers"

The exclusive garden that nurtured the warriors of Higo

A story of nation building— The era of Katō Kiyomasa

Who was Katō Kiyomasa, recognized as a leading politician and one of the key figures in the development of modern Japan? An introduction to the man and his achievements.



4 Kiyomasa enters the Kumamoto domain

Based on drawings illustrating the life of Katō Kiyomasa, from the collection of Kumamoto's Honmyōji Temple, this episode shows the compassion of Toyotomi Hideyoshi on his entrance into Higo, and the three family crests.



5 Fortification of Kumamoto Castle

We will now show stories about the mystery of Kumamoto Castle's two large and small castle towers, the distinctive stone wall, the many remaining wells, and the ginkgo trees planted by Katō Kiyomasa in the castle keep through a single drawing depicting Kumamoto Castle in the early days being handed over to the House of Hosokawa.



A story of culture and the sword— The era of the Hosokawa clan

This exhibit introduces the achievements of the Hosokawa clan, nurturing the people and culture and expanding upon the foundations laid by Katō Kiyomasa. The Hosokawa clan sought a balance of literary and military arts, and setting the direction of future Higo history and cultural development.

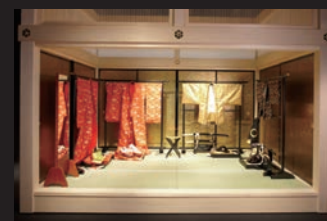


7 Restoration Image of Kumamoto Castle

A CG reconstruction of how Kumamoto must have looked during the middle Edo period. Take a dynamic virtual tour through the castle, with bird's-eye views and variable point-of-views.

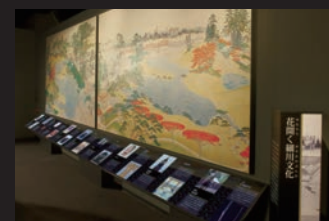


8 Sankin kōtai



9 Experience the life of Kumamoto royalty

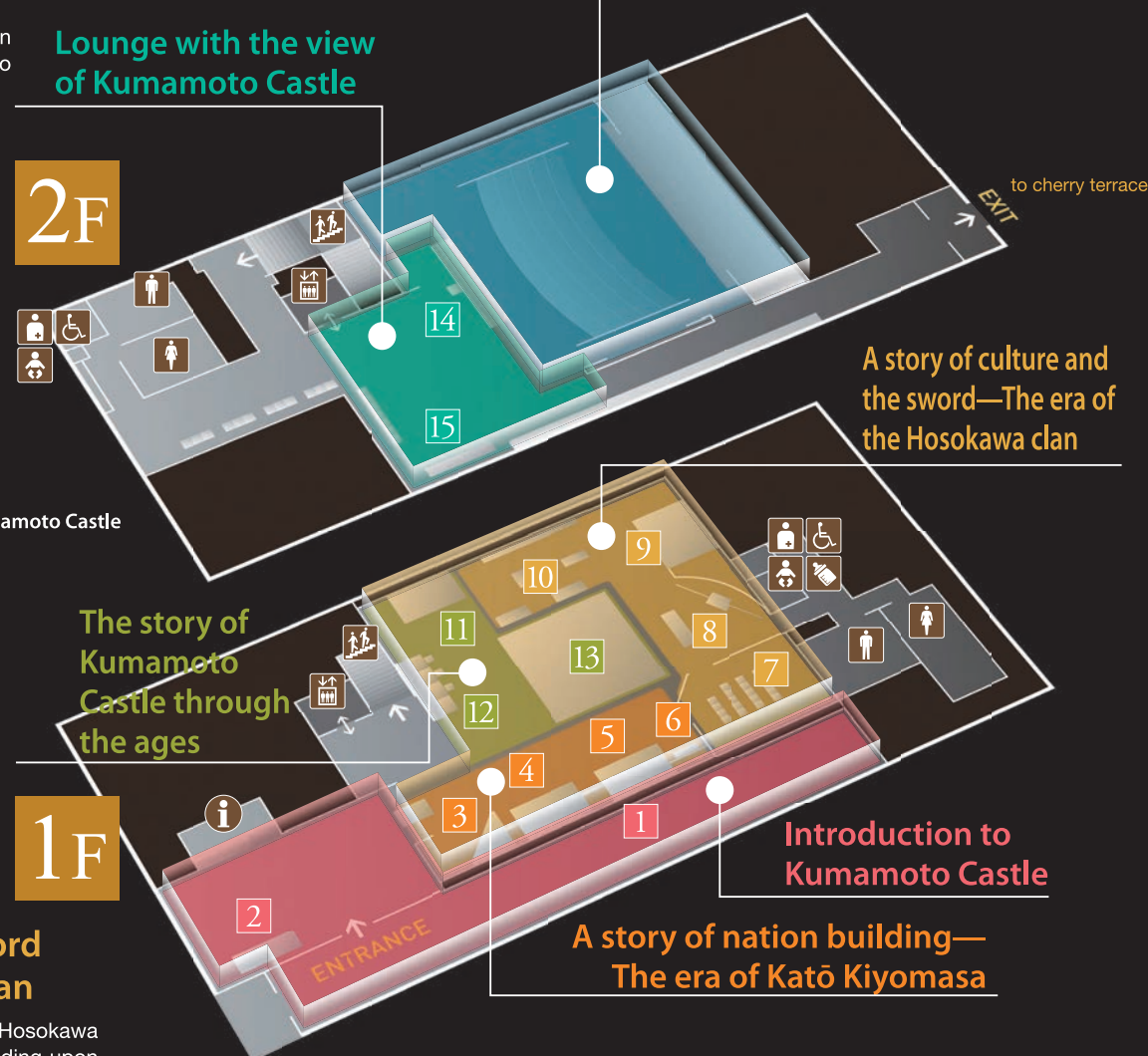
Try on period clothing and become the Lord and Lady of the domain, against a realistic background image.



10 Blossoming Hosokawa culture

Lounge with the view of Kumamoto Castle

2F



Wakuwaku Za Story Palace

2F

Wakuwaku Za Story Palace

An entertaining combination of videos, historical materials and live performances sure to delight.

The broad canvas of history centered on Kumamoto Castle is presented in theatrical form.



● Half a lifetime of General Katō Kiyomasa, valued for his loyalty

In the 16th century, at the end of the Sengoku period, ninja entered Kumamoto Castle and stole the diary kept by Lord Katō Kiyomasa. Two fox brothers use their magical powers to recover the diary while showing glimpses of Kiyomasa's achievements.

● Meiji Era Kumamoto, told in photographs

A novice cameraman tries using an old camera owned by Tomishige Rihei, who photographed Kumamoto in the Meiji era, and is transported in time back to the Satsuma Rebellion, and to meet literary greats Natsume Sōseki and Lafcadio Hearn.

● Hosokawa Clan's Sankin Kōtai Journey By Sea

When Lord Hosokawa of Kumamoto is summoned to serve in Edo (Tokyo), young Tomekichi takes the place of his sick father in the retinue, and receives instruction on the sea route and preparations, together with the publisher of the kawaraban newspaper, from the magical kappa.



● Kumamoto's Famous Water Story

The kappa, a magical creature who lives in the water, was ordered by Lord Katō Kiyomasa to perform one good deed every day to atone for his tricks. Here he journeys to the famous waters of Kumamoto with a young boy searching for his pet turtle.

● Rediscover Kumamoto's History!

In this quiz, hosted by the tanuki famous in Higo folktales and songs, you can try your skill against Gen the Carpenter, and see who knows more about Katō Kiyomasa and Higo. Answer them all correctly for a prize!

● Great Men of Kumamoto Castle

The giant ginkgo tree planted when Kumamoto Castle was built tells the city bird—the great tit—tales of Katō Kiyomasa, the Hosokawa clan, master swordsman Miyamoto Musashi and other famous figures of Kumamoto.

Lounge with the view of Kumamoto Castle

Watch the transformation of Kumamoto Castle over time, and the many events held in Kumamoto throughout the year.



14 A year in Kumamoto Castletown:
Twenty-four seasons and annual events

15 Kumamoto Castle revival

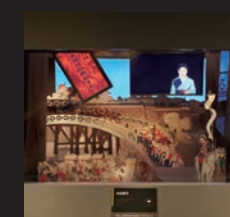
Traces the restoration of Kumamoto Castle from the Showa era to the present, and into the future

The story of Kumamoto Castle through the ages

Tales of Kumamoto Castle during and after the Meiji Restoration, concentrating on the Satsuma Rebellion.



13 Walk through the castle town through the ages



11 Satsuma Rebellion
(Seinan Sensō)

We will now show Japan's last civil war: the Seinan Sensō (Southwestern War or Satsuma Rebellion), started by the Satsuma warriors who were commanded by Saigō Takamori who was the main architect of the Meiji Restoration. This will be followed by the story of the "Siege of Kumamoto Castle" and its future, decided by this outcome, as shown through early tabloid color woodblock print newspapers.

12 Famous historic person
quiz game

An exciting quiz, with famous people from Kumamoto asking you tough questions.

